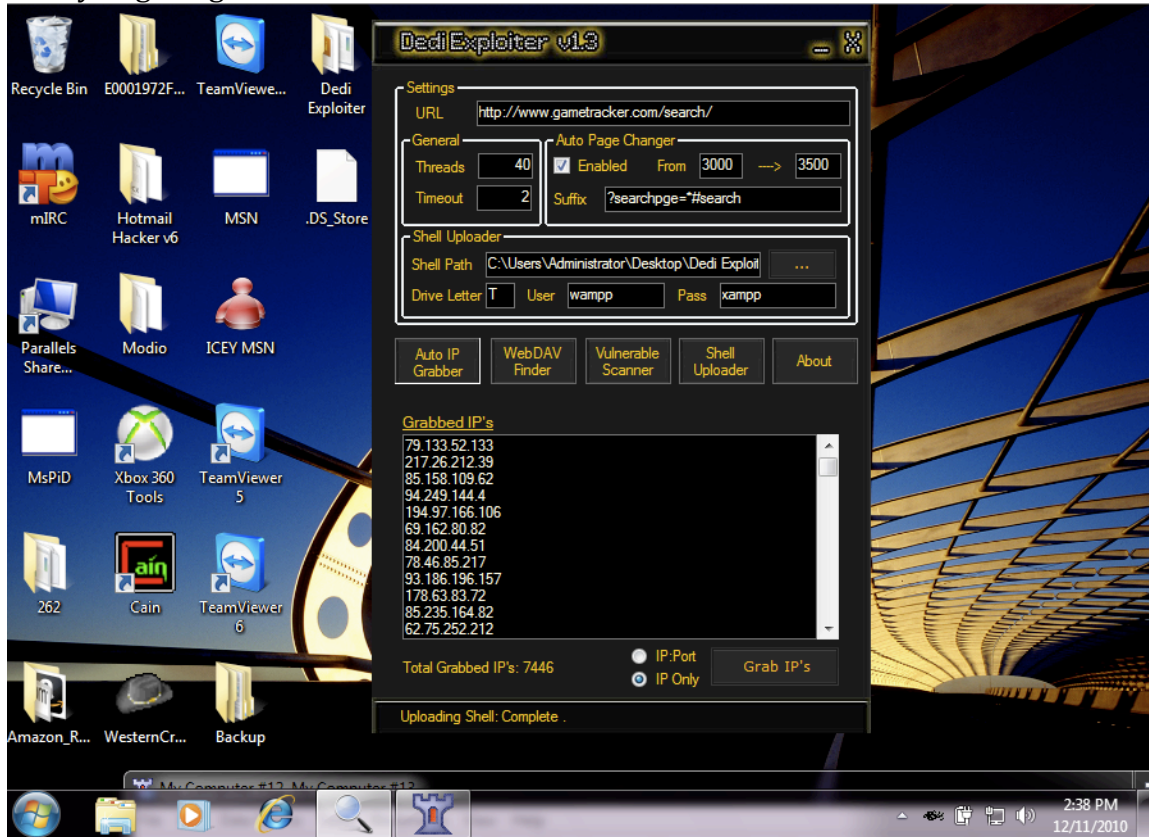


Hello Thanks for purchasing Dedi Exploiter! Here I will guide you successfully on how to get your first dedicated server!

Step 1-

First off we will need some ips.

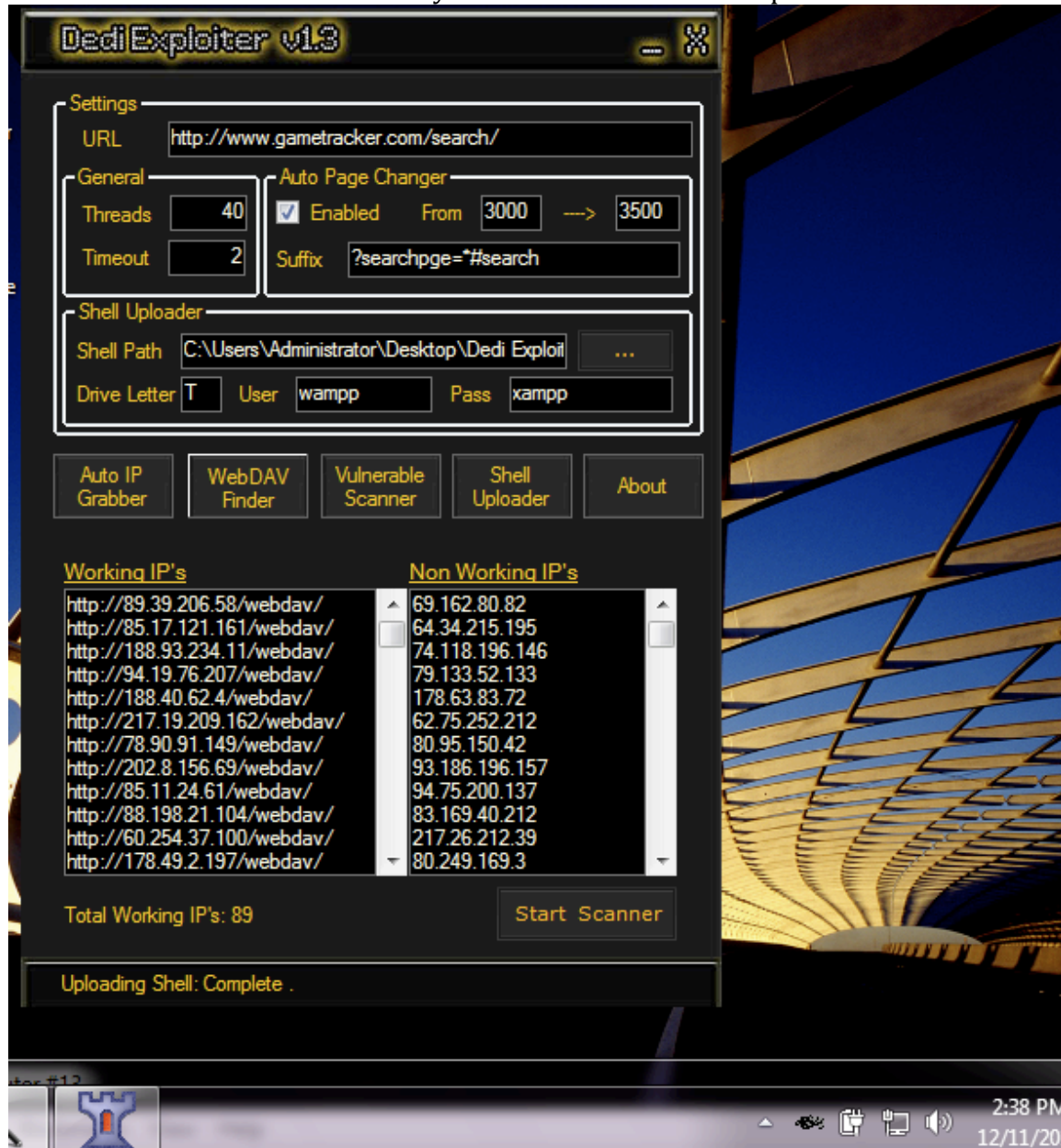
Once you got a good site lets scan it!



Here you see I got my link and page changer. I recommend not doing this much Pages for I have a T1 Bandwith cable. Good job you got some IP's but lets see if they will past the second test.

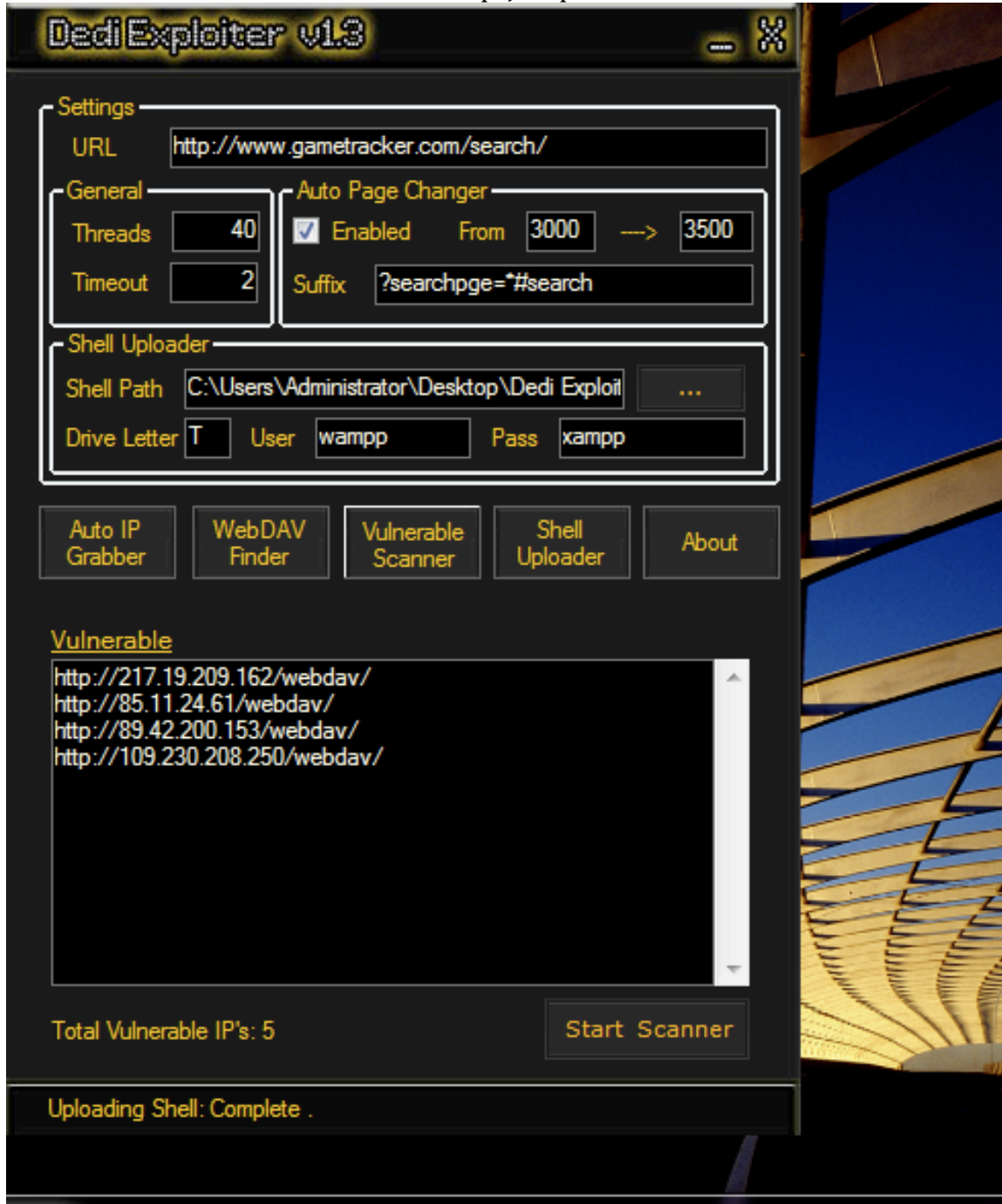
Step 2-

Click on WebDAV Finder. Then all you have to do is Scan the ips!



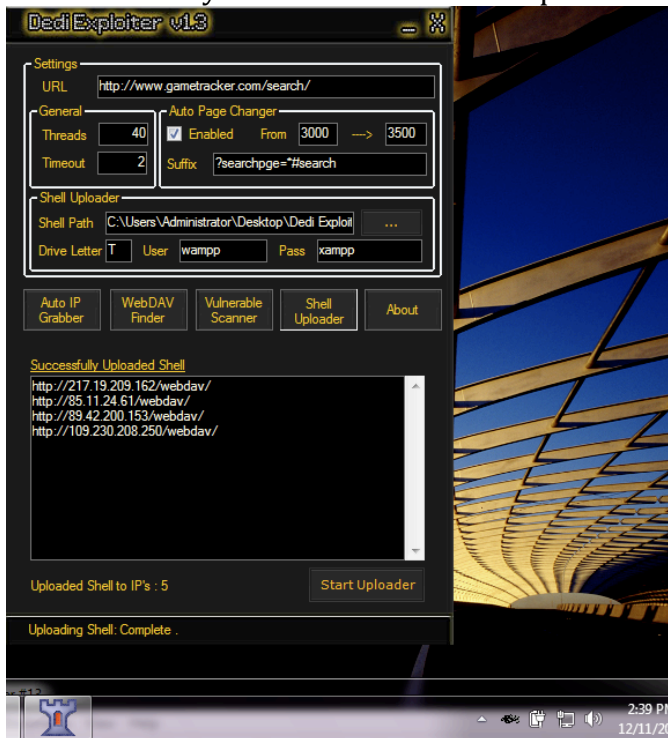
Hopefully you receive some Working IP's! That is great! Your half way done!
If you didn't get any then just pick some different pages!!
Once everything is done continue to Step 3 on the next page!

Step 3- Now We are making Progress! But this is the final IP's that matter! Once you finished step 2 click on "Vulnerable Scanner" and once your there click "Start Scanner" And it will find the ones that are soon to be yours! Sometimes a little white box will show up. Just press ESC and it will be fine.

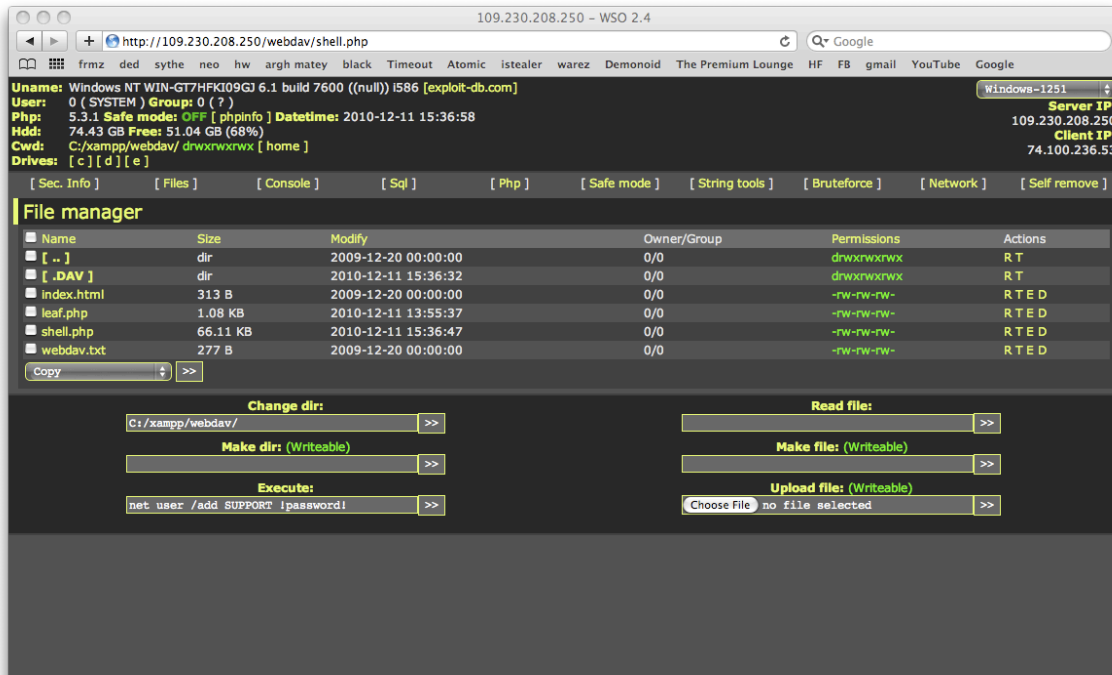


Got some IP's? Great! Now we can do the next step! Go to step 4 for the next step!

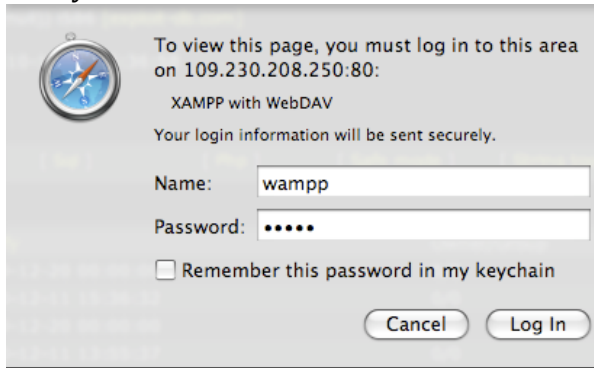
Step 4- Now you're ready to upload your shells!
Okay now... You must click upload shells.



It will show you the link! Go to it now and you'll see this weird Screen



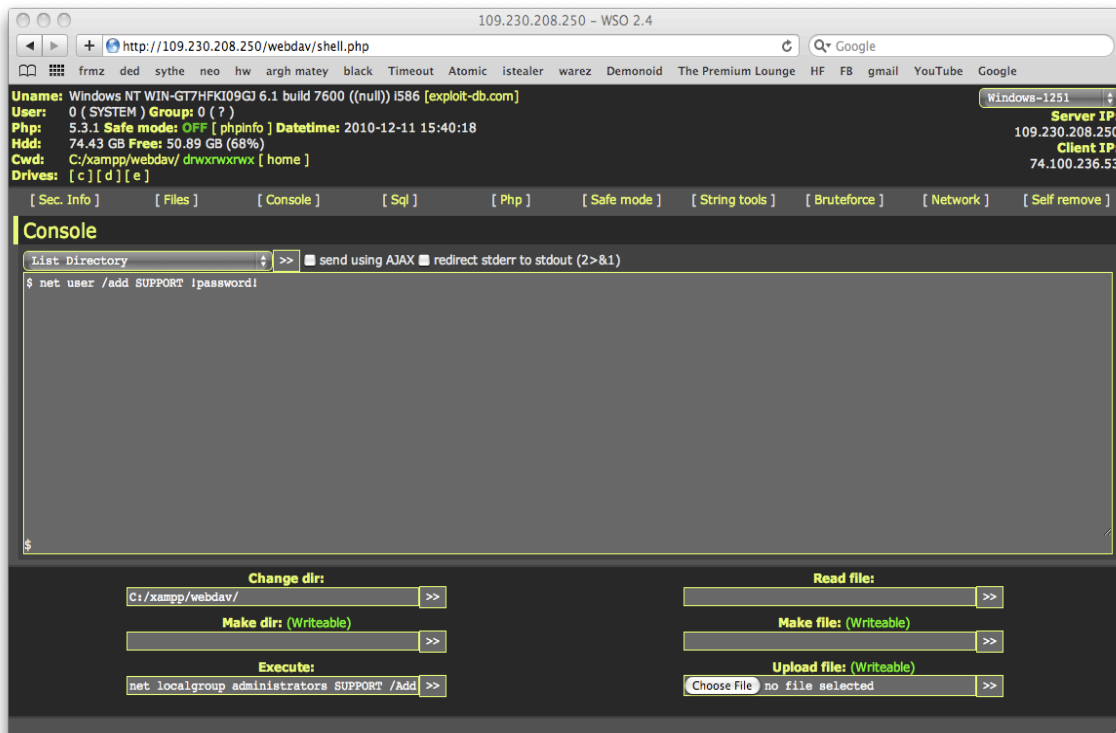
Once you see the screen You will see the box on the bottom right “Execute”
Enter this into it “ net user /add SUPPORT !password!” And take out the quotes.
Now you will see this screen-



Name/User is: wampp

Password is: xampp

And Now you'll see this screen Below

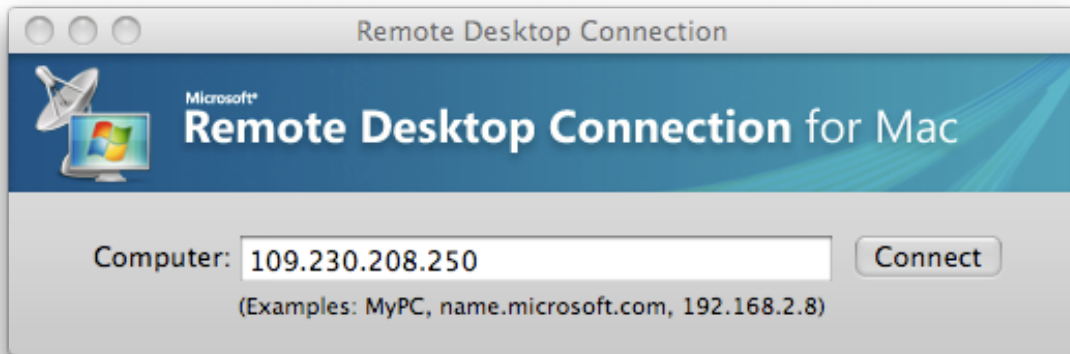


Now you must type “net localgroup administrators SUPPORT /Add “
Now you just created an Admin Account.

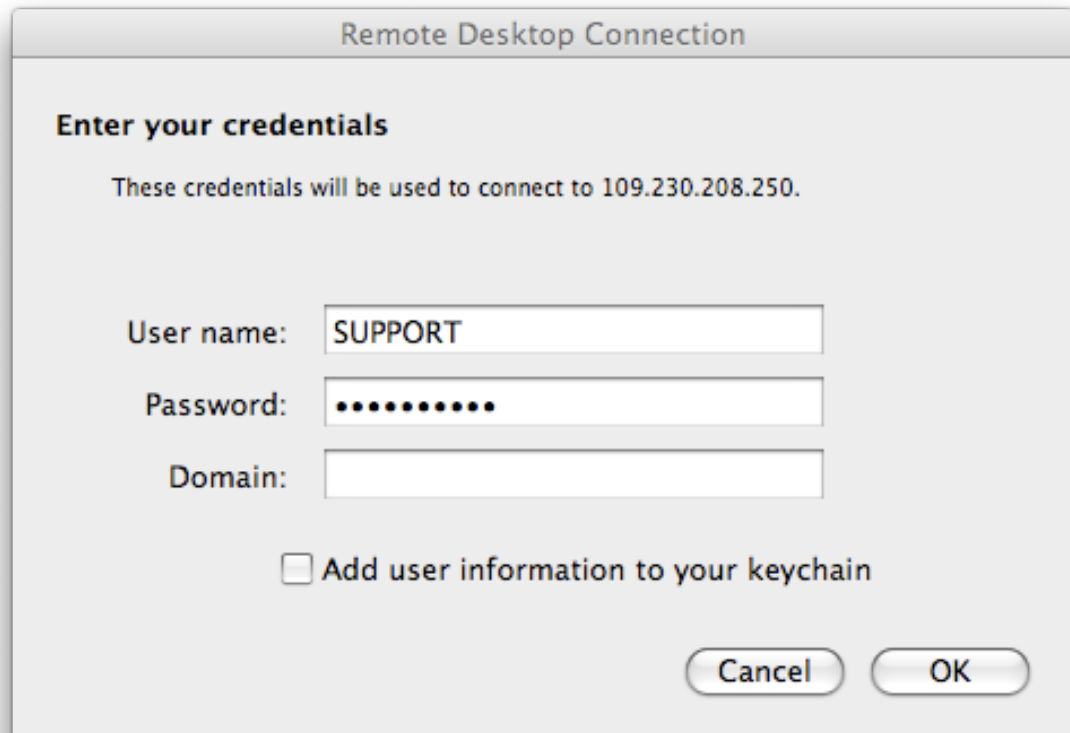
Congratzzzz! Now lets check out the dedi via Remote Desktop Connection.
NOTE: Not all dedis have RDC if not you can use them for shells.

EXTRA STEP: Go to the Next page if you want to Remote Desktop Connect!

Open up RDC (MAC or Windows or Linux) And enter the IP and connect.

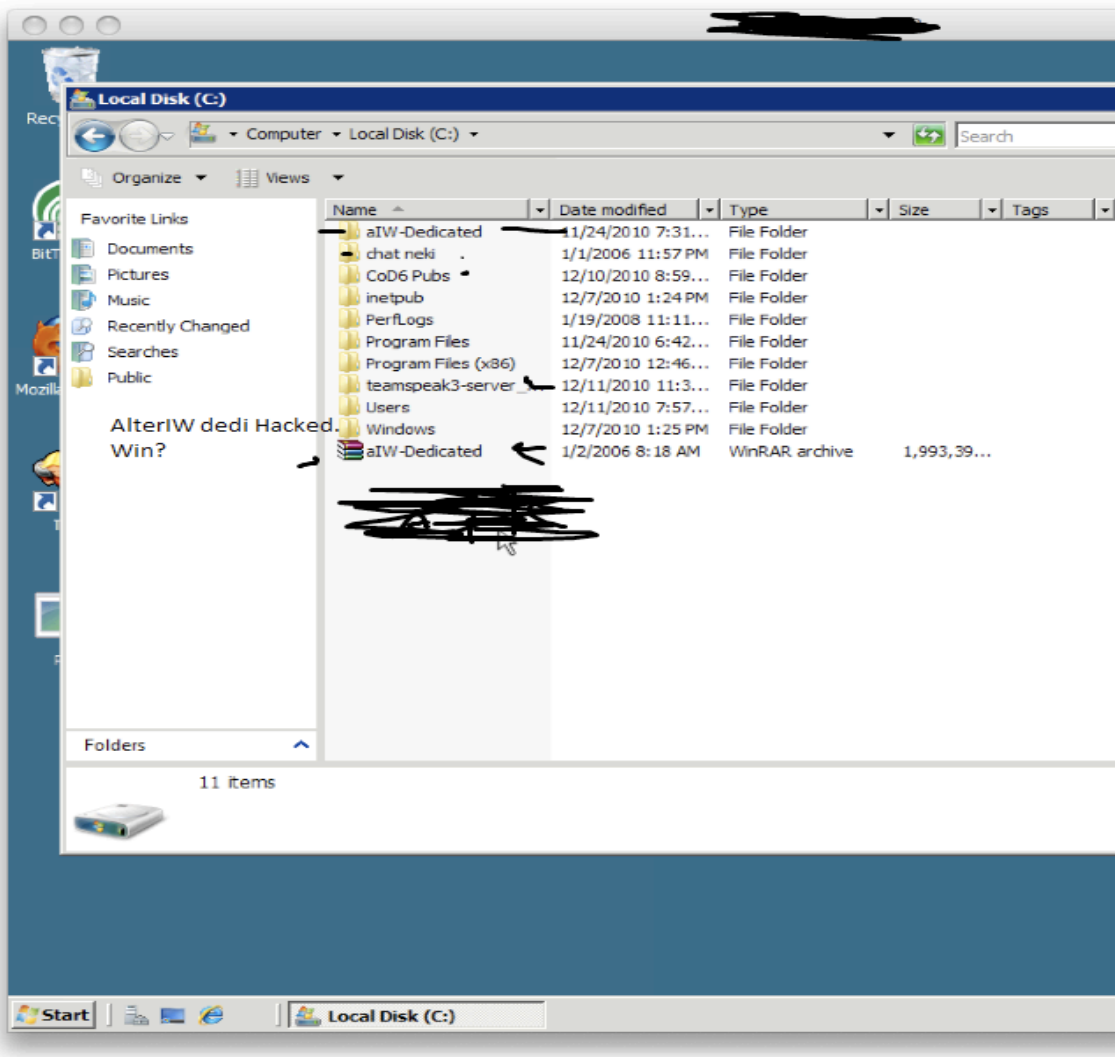


Okay Now Enter the user info u made! The default user account we just made was The User name is: SUPPORT and the password is: !password! And the domain is empty.



Next page for the Last step.

Now success!
You should be in!



NOTE: If it says wrong conditionals/ Not able to connect. It is because the dedi does not have RDC.:{
BUT NO WAIT! You can upload a DDoS shell to make your own shell booter or sell it!

→ Q&A ←

Q: What can you do once your in?

- A: 1. You can do so much! Plant Rootkits/ Upload your RAT on the server:D
2. I upload my RAT's incase they try to take back there dedi.
3. Host a web IRC bot or Shell Booter
4. Store files or host websites or shells
5. Make a Botnet!

Q: How much are these worth?

A: Depends on the RAM/Storage/Cores and ETC. Usually around 5-8\$ but The shells with the DDoS 1\$ per shell.

Q: Where do I get the Shells?

A: Scroll All the way down for a link I provided you with!

Q: When I Search for IP's my internet disconnects!

A: Don't search over 20 pages if you got a lot of people on your bandwidth!

Q: How do I make the Dedi "Unhackable" once I hacked it?

A: Change the WebDAV password/ETC

Q: Can I use the IP's You had above?

A: sure if you want to waste your time. I hacked them already and uploaded my stuff☺

Q: Can I resell the dedi?

A: YES or course wasn't that the reason you bought this?

Q: I found a bug! What should I do?

A: Contact WesternGuy or iolaka ASAP!

Q: Can I just attempt to crack the software?

A: NO! If you do so your license will be terminated! Plus you already have it so why would you want to Ruin the sales?

Thanks for reading!

Program By WesternGuy And iolaka!

Main Shell: <http://www.megaupload.com/?d=STZL1914>

Shell Pack: <http://www.megaupload.com/?d=SMSVS1AW>

Guide Made By: Injection